



MANN Cabin Filters

State-of-the-art technology for a better atmosphere inside the vehicle.

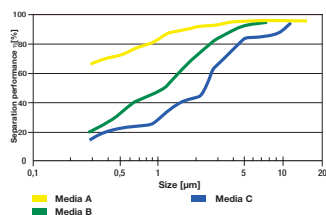
**MANN
FILTER**



The benefits of MANN Cabin Filters:

- optimum ventilation inside the vehicle through low flow resistance
- even the smallest particles (0.5 µm) are reliably filtered out
- consistent filtration performance throughout the entire service interval
- greatest filtration efficiency through a combination of mechanical and electrostatic attraction
- exact fit and seal
- detailed fitting instructions (passenger cars) for easy and fast assembly

Separation performance of various filter media



MANN Cabin Filters: Clean air inside the vehicle

The air in urban areas contains large quantities of dust, pollen, soot and other particles, as well as gases which are harmful to health. More and more people are suffering from allergies and are increasingly aware of the subject of air conditioning and cabin filters. As a result, more vehicles leave the factory already fitted with cabin filters.

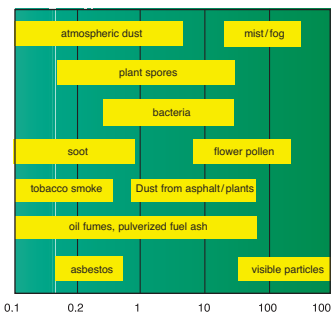
Growth market: Cabin filters

In Germany, 10,000 vehicles per day are fitted with cabin filters as standard, and this trend is increasing. Original MANN cabin filters are very highly regarded by the vehicle manufacturers.

MANN cabin filters remove virtually all pollen and other unwanted particles, as well as harmful gases (adsotop® combi-filters) from the air, thus ensuring a better atmosphere inside the vehicle. This is particularly important for people suffering from allergies, asthma, and for children.

Continuous research for new filter media

We are constantly optimising the filter media for MANN cabin filters, and adapting them to meet increasing requirements. Choice of filter media is always linked to the vehicle manufacturer's specification and the space available in the vehicle. As a result, the optimum filter media is used by MANN-FILTER for every application.



Pollutants in road traffic (Aerodynamic diameter in µm)

Nonwoven: A reliable media

MANN-FILTER nonwoven materials are made up of many small fibres. Their structure provides reliable and almost complete separation of dust and soot particles. MANN-FILTER nonwoven naturally does not have any chemical impregnation, and is odour-free.

Shapes of MANN Cabin Filters

As the demands made on cabin filters vary, there are two types of MANN cabin filters available:

- particle filters
- adsotop® combi-filters (with activated charcoal)

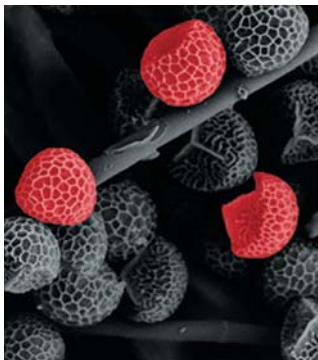


Particle filters: Maximum possible filtration performance in the smallest space.

The particle filter keeps dust and particles such as pollen, diesel soot or tyre dust away

from the interior of the vehicle. It is important to obtain the maximum possible filtration performance in the space available. With MANN-FILTER, that goes without saying. Through the special pleating technique, the actual filtra-

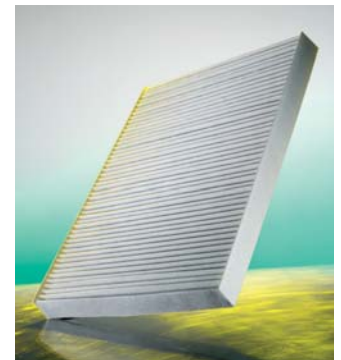
tion area is increased without having to change the size of the filter. Laboratory tests confirm that up to 95 % of dust particles and pollen are almost completely retained.



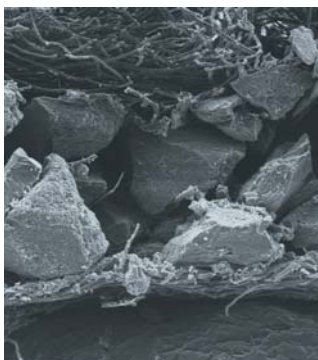
Microscopic view: Pollen deposited on the fibres



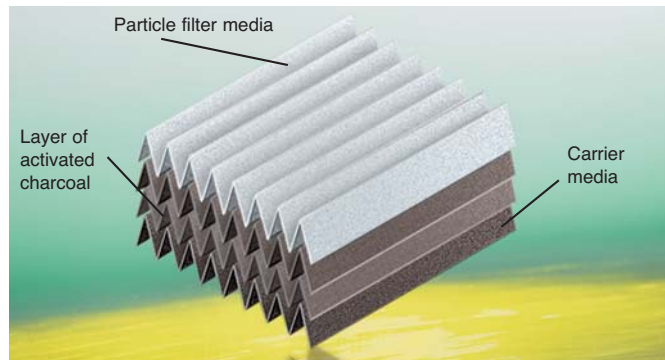
Cross-section of a particle filter: Through the special pleating technique, the largest possible filtration performance is achieved in the smallest space



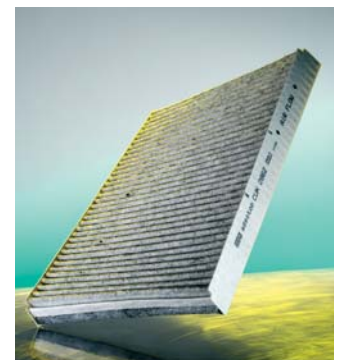
Cabin filter CU 2882



Microscopic view: Activated charcoal embedded in nonwoven



Cross-section of a combi-filter: The nonwoven holds back the particles, whilst the activated charcoal adsorbs gases and odours



Cabin filter CUK 2862

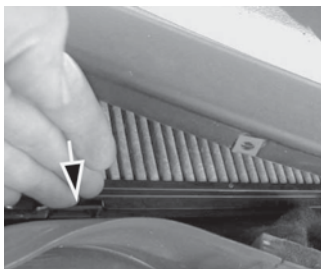
MANN adsotop® combi-filter: The activated charcoal specialist

The MANN adsotop® combi-filter has an additional function, compared with the particle filter. The activated charcoal layer embedded in

the nonwoven adsorbs, like a sponge, harmful gases such as nitrogen dioxide, fuels and ozone into pores which are 10,000 times finer than a human hair. That is how the combi-filter ensures a healthy cabin environment. This

modern filter consists of a nonwoven-based particle filter media, an activated charcoal layer and a carrier media to improve stability

MANN Cabin Filters: Easy handling



Now you can breathe deeply with MANN Cabin Filters. Simply order the MANN Cabin Filter animated sequence

Saving time and costs: The installation instructions for MANN cabin filters

The cabin filter is fitted in different places, depending on the type of vehicle. In some cases it is even hard to find. MANN-FILTER provides practical support when servicing through detailed installation instructions.

For you, this means:

- easy handling
- quicker work
- satisfied customers

The practical MANN-FILTER installation instructions supplied with cabin filters for every type of passenger car make your job easier.

Advantages to you:

- immediate location of the fitting position
- fast and easy assembly thanks to step-by-step explanations

With these instructions, you save time and cost. Replacing the filter is therefore worthwhile for both customer and garage. The instructions are also available on CD-ROM.

You can order more product brochures, catalogues (also on CD-ROM), a cross-reference list and a dimension table under www.mann-filter.com or by telephone. Or you can use our internet catalogue.



MANN+HUMMEL GMBH, Automotive Aftermarket, 71631 Ludwigsburg, Germany
Customer Service Center, Germany: Tel. +49 (71 41) 98-25 50, Fax +49 (71 41) 98-25 58
Other countries: Tel. +49 (71 41) 98-28 80, Fax +49 (71 41) 98-25 58
E-Mail: customer-service@mann-hummel.com, Internet: www.mann-filter.com